



With the iDSD, one must ENABLE the “DSD over PCM” option with each audio playback software program.

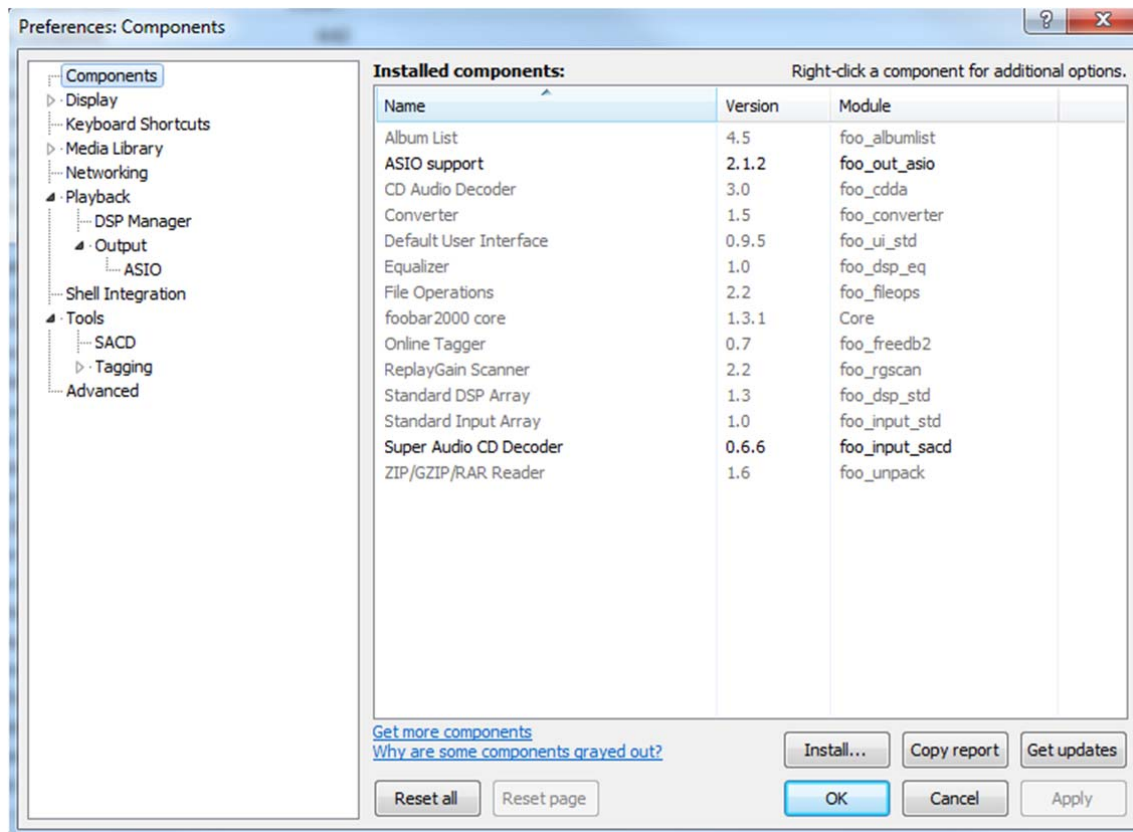
This ensures your computer audio program is configured to natively ENCODE DSD ready for the iDSD to natively DECODE DSD.

## Setup Instructions

The following are examples on each OS X and Windows platform, Audirvana Plus and JRiver media Center respectively (if your program is different, the principle remains the same but please consult your software vendor for more information).

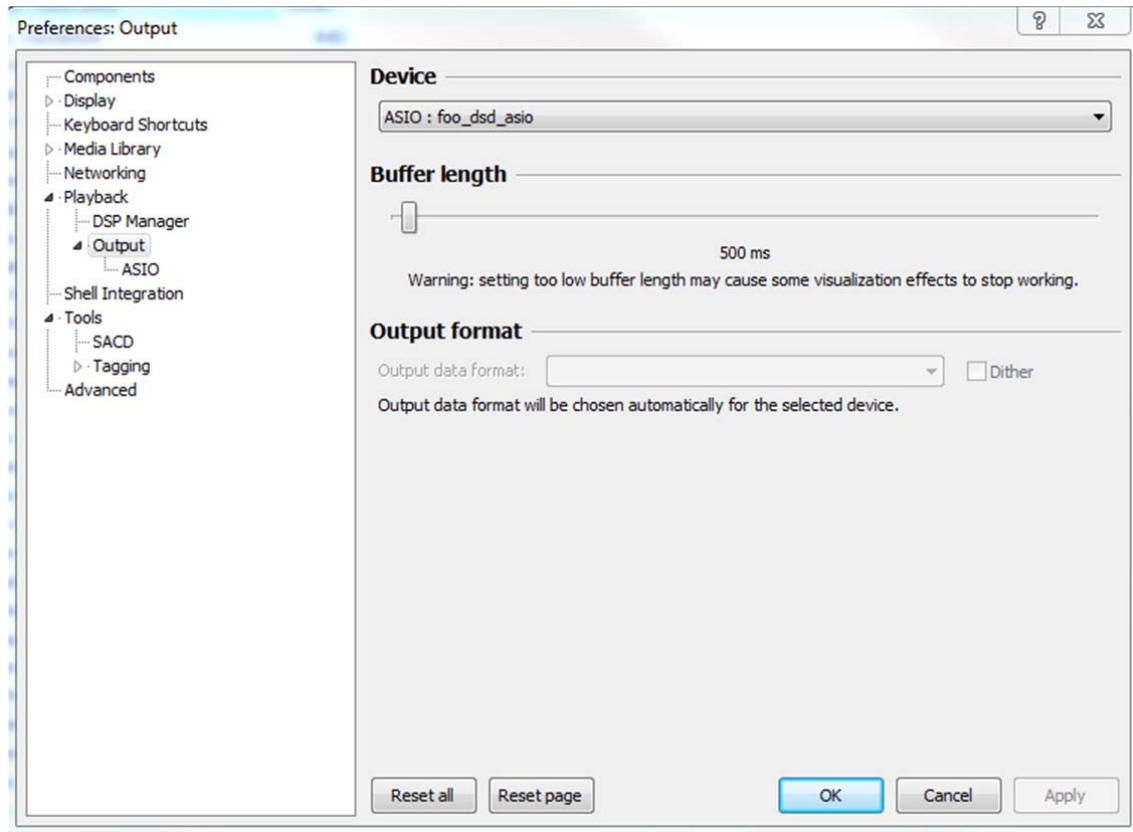


**Step 1:** Install the iFi driver and Foobar 2K – ensure all settings are correct.



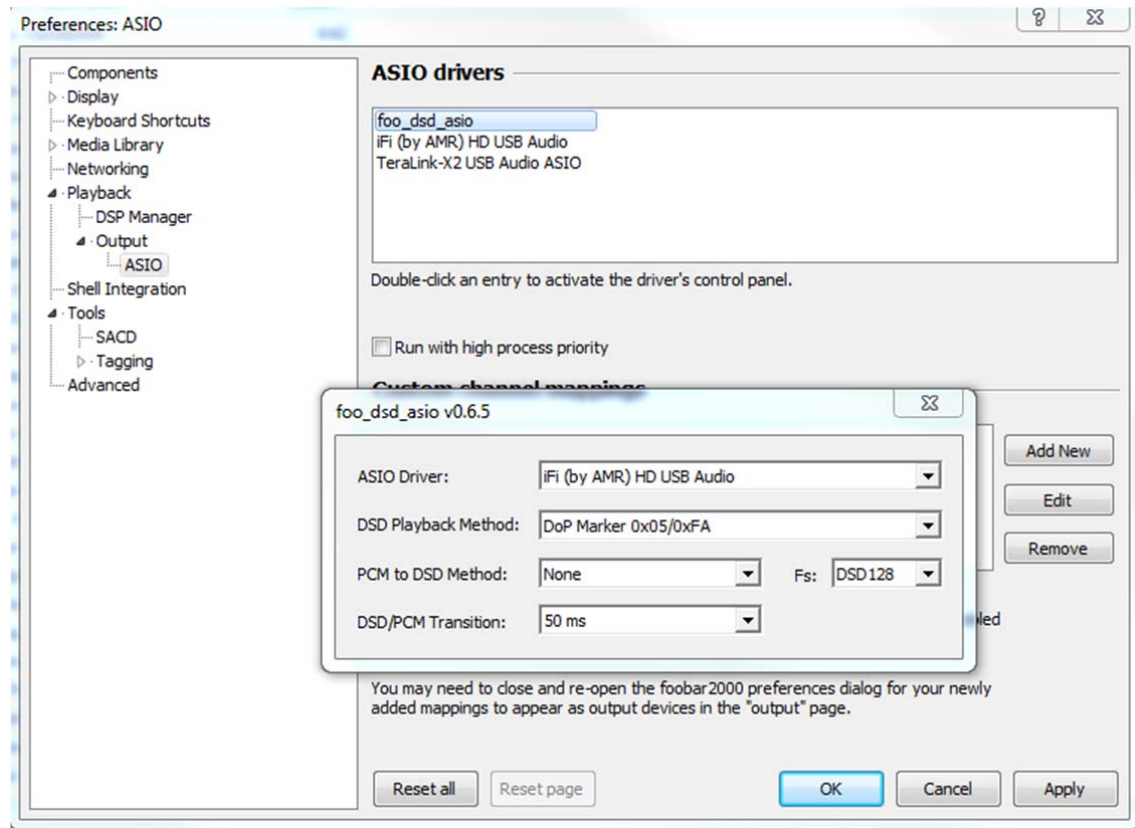
**Step 2:**

- Bitdepth: Automatic
- Buffering: 500 milliseconds
- Device: ASIO or WASAPI



**Step 3:**

Check the DoP settings for DSD playback (via DSD over PCM).



**Step 4:**

Exit. You are now ready to enjoy DSD without conversion to another format on your iDSD by iFi.

DSD64 | 5645 kbps | 2822400 Hz | stereo | 1:33 / 5:11 = Blue light on iDSD 😊